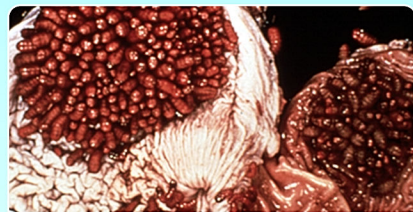
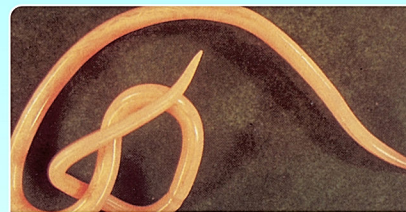


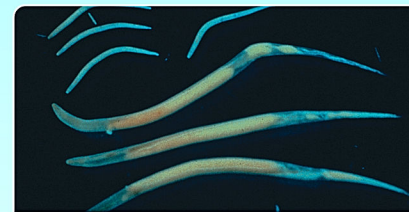
Encysted Small Strongyles
Moxidectin



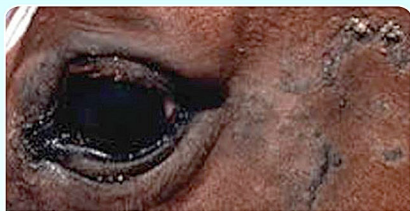
Bot Fly Larvae
Ivermectin/Moxidectin



Parascaris Equorum
(Roundworms) Pyrantel



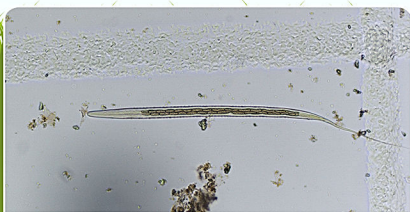
Oxyuris Equi (Pinworms)
Pyrantel



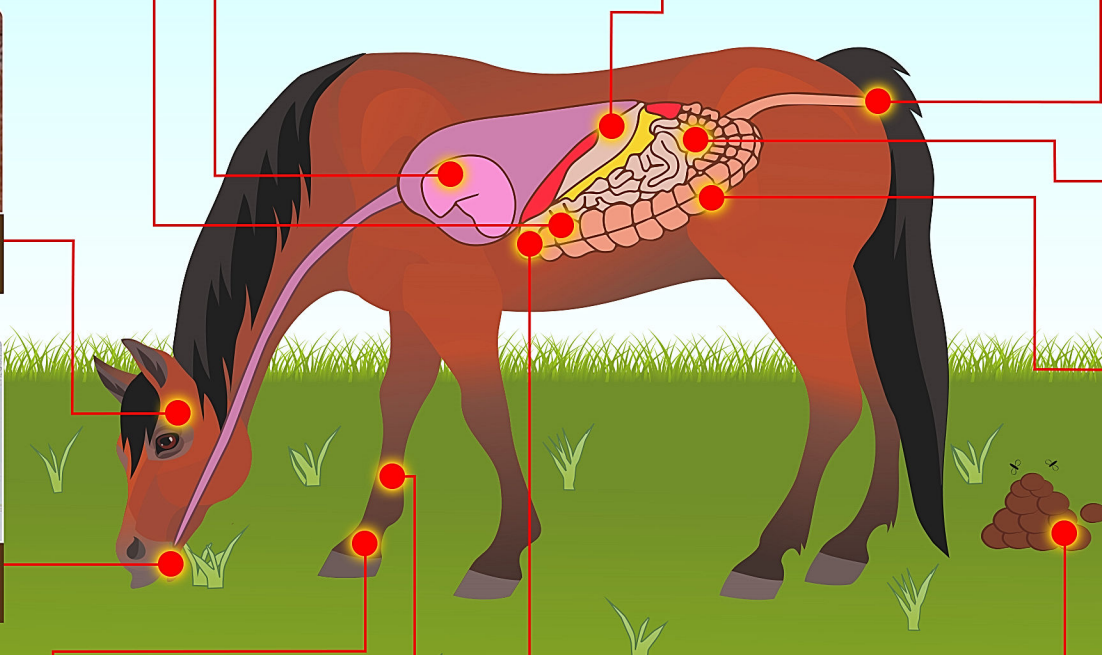
Onchocerca Cervicalis Lesions
Ivermectin/Moxidectin



Anoplocephala Perfoliata
(Tapeworms) Praziquantel



Strongylus Vulgaris
(Larvae on Grass)



Adult Strongyles on Intestinal Wall
Ivermectin/Moxidectin/Pyrantel



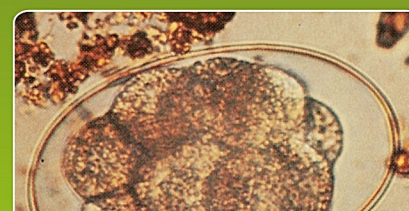
Bot Eggs on Legs



Gasterophilus Intestinalis
(Adult Bot Fly)



Strongylus Vulgaris
(Arterial Damage) Moxidectin



Strongyle Eggs
in Manure



Your Partner in Horse Care™

How Parasites Get Into Your Horse.

Horses get infected by parasites in a variety of ways depending on the parasite's life cycle. Different types of parasite exposure are highlighted in the above chart along with recommended treatment options in yellow.

Farnam with design and Your Partner in Horse Care are trademarks of Farnam Companies, Inc.